



PEACE OF MIND™ NEWSLETTER

Exclusively for POM Members

801 E. Charleston Road
Palo Alto, California 94303

June, 2025



What to Watch Out For?

Here is an understatement: Rules, laws, and strategies are in flux. We do not know what is next. Nevertheless, here are some bullet points for you to be aware of and consider.

- Enormous cuts in the federal Medicaid budget are expected. This will have a major impact on Medi-Cal, California's version of the federal Medicaid program. Eligibility rules are expected to tighten and fewer dollars will flow to the state of California.
- The level of estate tax protection is likely to be maintained. We expect the current tax law to be extended, although there are some "deficit hawks" in the Republican party who may object or dilute the legislation. Stay tuned.
- Staffing cut-backs at the Social Security Administration, the VA, and other government funded agencies will adversely affect service. We see no concurrent efforts to use technology or AI to somehow fill in the gaps.

- Funding for area agencies on aging and senior centers will likely and substantially be reduced from federal sources. Here, too, quality and quantity of services are expected to be more limited over the next few years.

This means that careful planning is needed to maximize the use of your private resources and to protect them to the greatest extent possible.

Do what you can and understand what you can control. For example, you can avoid property tax increases under Proposition 19 with proper planning. You cannot change tax laws, such as Proposition 19, since a voter initiative will be needed to do so.

As always, continually explore your options and take action where you can.

Peace of Mind Webinar **Multi-Generational Planning**

What should you tell your parents to do? Your siblings? Your kids? How does it all fit together?

Date: Wednesday, July 9 2025

Time: 1:00 PM

Register Online at www.Gilfix.com/peace-of-mind/webinars

Watch Out for your Proposition 19 Letter

Unless we already took care of planning on your behalf to avoid property tax increases under Proposition 19, you have received or will receive a letter from us about this vitally important topic. We are making it a special benefit of membership in the Peace of Mind program that you get this individualized attention. We are doing research to determine your property taxes and property values. Based on that, we are informing you – or are available to inform you – about the property tax increases that will happen upon your passing.

We emphasize that we can avoid this problem by proactive planning. You will be in touch with us when you have questions and when you are ready to address the problem, saving real property for the next generations.

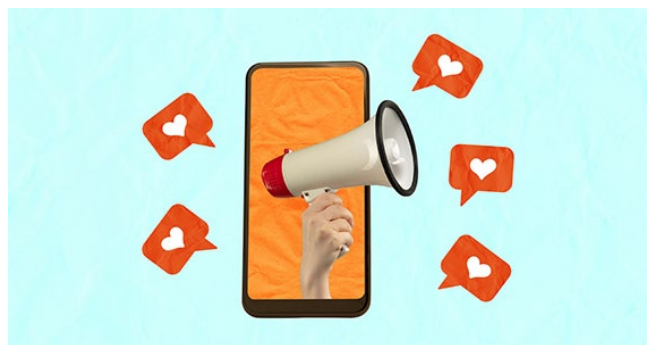
Successful POM In-Person Seminar, April 29

About 30 members of our POM program attended a vibrant discussion of “Top 5 Issues of 2025.” We talked about property tax challenges, in particular. Many attendees were already engaged in the process of avoiding property tax increases for their children.

We presented updates on the estate tax, threats to special needs planning in light of current actions by the administration, and expected cut-backs in the state Medi-Cal program. Mike Gilfix talked in some depth about long term care planning options, including the cost of care at selected “life care communities” in the area.

A handout to all attendees was Mike’s article from 2005, *“Estate Planning to Stay for Clients Who Want to Stay Out of a Nursing Home.”*

While authored 20 years ago, the planning points explained in the article remain timely and appropriate for anyone who wants to maximize care at home and minimize the possibility of being in a nursing home. Accordingly, a copy of the article is attached to this newsletter. We urge you to read it, think about it, and let us know if you have questions or action steps.



New POM Benefit – Referrals

Many members of our POM program have referred family members and friends to us for help.

We want to more vigorously express our appreciation.

If you refer someone to us and they retain us for estate and related planning, we will acknowledge the referral with a free one-year extension of your Peace of Mind program membership. This is valued at approximately \$400.

Keep this in mind as you educate relatives and neighbors about the extraordinary work we do with regard to property tax planning, estate tax planning, special needs and trust planning – and more.

Peace of Mind Webinar

Multi-Generational Planning

What should you tell your parents to do? Your siblings? Your kids? How does it all fit together?

- Should you Create a Family Foundation?
- Family Protection Trust for you.
- Prop 19 – Property you will inherit.
- Are they setting aside money for your kids?
 - Worries?
 - Safe ways to do it
 - Crummey Trusts
 - 529 plans

Date: Wednesday, July 9, 2025

Time: 1:00 PM

Register Online at

www.Gilfix.com/peace-of-mind/webinars or email

Shanna@gilfix.com

★Use or Share your FREE hour POM consultation★

Remember: If you do not plan on using your annual consultation, let a family member use it. It is transferrable. Use the attached certificate and just make the appointment!

PEACE OF MIND

FREE CONSULTATION* CERTIFICATE

I/We, _____, give to _____
[POM Member] [Recipient]

our 20____, annual free Peace of Mind Consultation to be used on or before
_____, 20____.

Dated: _____
[POM Member]

[POM Member]

*When calling to make this appointment, please indicate that you have this Certificate

GILFIX & LA POLL ASSOCIATES, LLP

PEACE OF MIND

Member Newsletter

UPCOMING EVENTS

Exclusive Peace of Mind Webinar
Multi-Generational Planning

Date: Wednesday, July 9, 2025

Time: 1:00 PM

Register Online at www.Gilfix.com/peace-of-mind/webinars/

**NEWSLETTER
FOR EXCLUSIVE
POM MEMBERS**